



GALLERY



Kati Thamo

Listening for the Call

Exhibition Catalogue

May 2nd – 13th 2023



Artist Statement

This exhibition of prints draws on the intrigue that birds hold for us.

The works range from migratory waders which cross the hemispheres to those living close beside us, and yet others whose calls we hear but only glimpse in the undergrowth.

Their songs and calls are often the background soundtrack to our lives - whether on the coast or further inland, from bush to forests or in our parks and backyards.

The birdcalls we hear signify a sense of place, but some birds are now so endangered that we listen for their calls in vain. In my images I try to capture a sense of poetry in these fleeting encounters.

In 1998 Kati Thamo completed a Visual Arts degree at Edith Cowan University in Perth, followed by an Honours year in printmaking at the Hobart School of Art in 2001. Since then, Kati has been engaged with her printing practice from her studio in Albany, on the far south coast of Western Australia. Kati works across a range of print mediums and incorporates drawings, textiles and sculptural installation in her overall art practice. Kati's prints have been exhibited nationally in both solo and group exhibitions and are held in public and private collections across Australia and overseas.



Caught by Chance
Multiplate etching with watercolour
Edition of 16
222 x 182 mm

Unframed \$380



Caught in the Act
Multiplate etching with watercolour
Edition of 20
225 x 182 mm

Unframed \$ 380



A Small Song
Multiplate etching
Edition of 25
83 x 193 mm

Unframed \$300



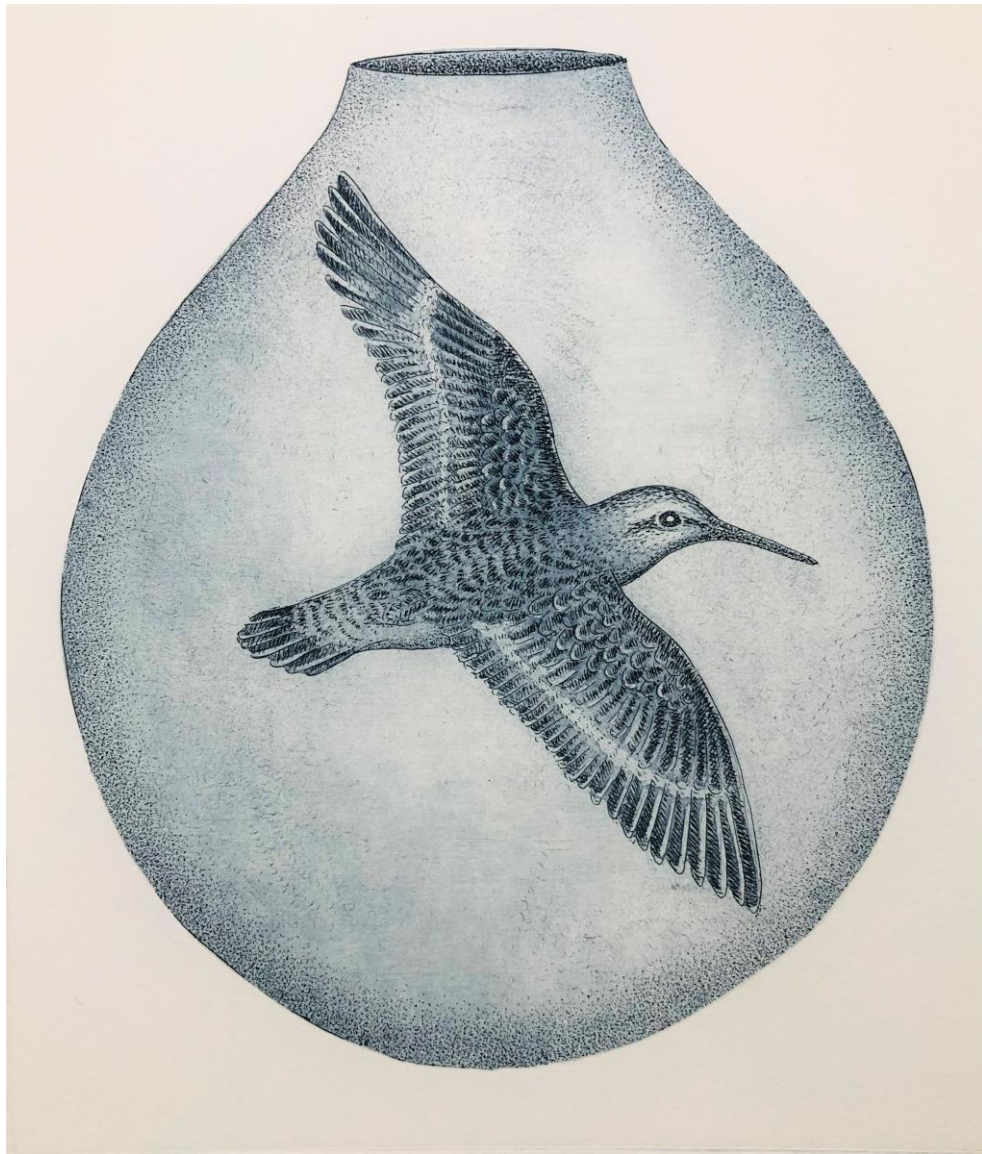
Heeding the call
Multiplate etching
Edition of 30
200 x 230 mm

Unframed \$440
Framed \$660



Last Song
Multiplate etching
Edition of 20
233 x 173 mm

Unframed \$360



In the Air
Etching
Edition of 25
220 x 254 mm

Unframed \$420



In the Samphire

Etching

Edition of 25

180 x 225 mm

Unframed \$420



Of the Song Beyond
Multiplate etching
Edition of 30
200 x 230 mm

Unframed \$440
Framed \$660



Birds of a Feather
Hand printed cut out birds
Variable dimensions

Unframed \$220 each



Ebb and Flow
Etching
Edition of 25
274 x 285 mm

Unframed \$460



Fleeting Encounters – Emu Wren

Etching a la poupee

Edition of 20

495 x 260 mm

Unframed \$550



Following the Curve of the World

Etching

Edition of 12

450 x 260 mm

Unframed \$800



Nesting
Etching
Edition of 25
180 x 303 mm

Unframed \$420



Taking Flight
Etching
Edition of 25
248 x 260 mm

Unframed \$420



Tidal Flats
Etching
Edition of 25
220 x 260 mm

Unframed \$420



On Reflection
Multiplate etching
Edition of 22
220 x 245 mm

Unframed \$440



Placemat for a Finch
Etching a la poupee with embossing
Edition of 25
300 x 460 mm

Unframed \$600



Placemat for a Spinebill
Etching a la poupee with embossing
Edition of 25
300 x 460 mm

Unframed \$600



The Scrub Wren (Sepia version)

Etching a la pope

Edition of 10

173 x 125 mm

Unframed \$320



The Scrub Wren (Blue version)

Etching a la pope

Edition of 25

173 x 125 mm

Unframed \$320



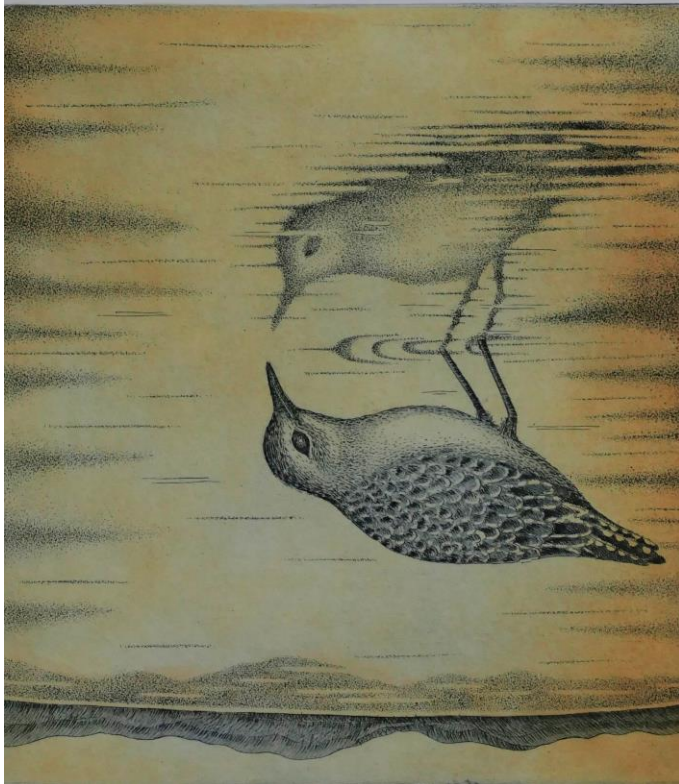
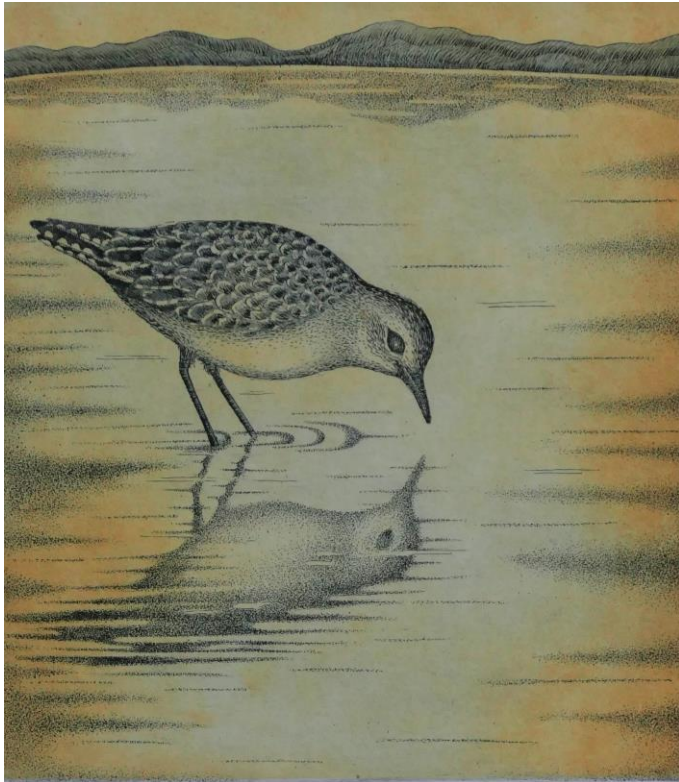
Wingspan
Multiplate etching
Edition of 30
300 x 220 mm

Unframed \$480
Framed \$780



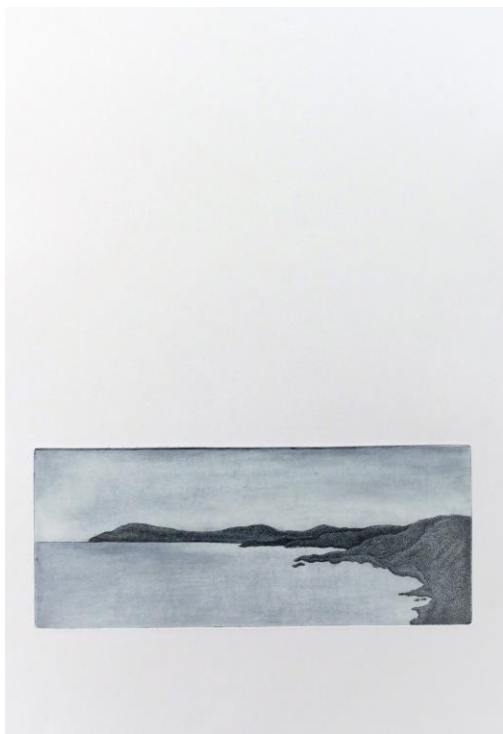
Within the Thicket
Multiplate etching
Edition of 30
200 x 230 mm

Unframed \$440
Framed \$660



In one World or Another
Multiplate etching
Edition of 3
220 x 510 mm

Unframed \$800



Winging Away (triptych)

Etching

Edition of 10

1500 x 700 mm

Unframed \$1800



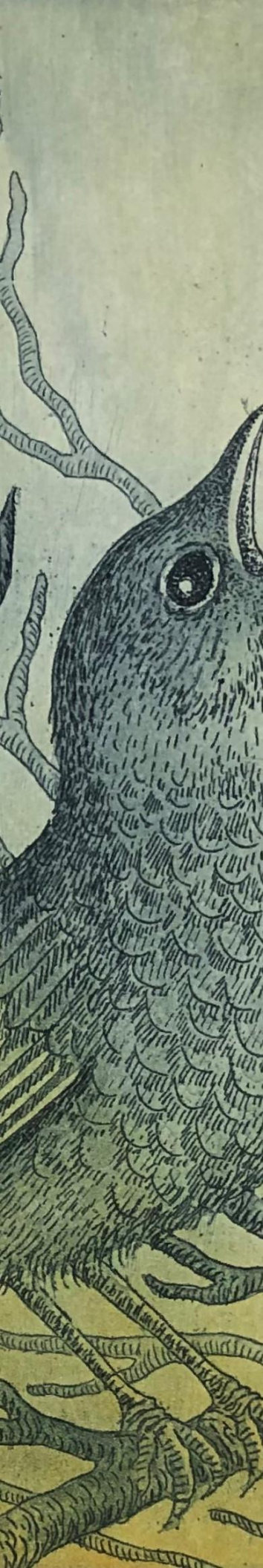
Flight Patterns 1 (above) & Flight patterns 2 (below)

Etching

Edition of 10

405 x 90 mm

Unframed \$360



CV

EDUCATION/ WORK EXPERIENCE

2006 Casual Lecturer in Visual Art, Edith Cowan Uni, Albany , WA
2002/4 Casual Lecturer in Printmaking, Edith Cowan Uni, Albany, WA
2001 Bachelor of Fine Arts with Honours, University of Tasmania
2000 Lecturer in Visual Art, Great Southern Regional College, Albany
1995-98 BA Visual Art, Edith Cowan University, WA

SOLO EXHIBITIONS

2022 Wingspan, The Goods Shed, Perth, WA
2019 Another Language, Beaver Galleries, Canberra, ACT
2018 Bird in a Bell Jar, Turner Galleries, Perth, WA
2016 Strange to Behold, Printmaker Gallery, Melbourne, Vic
2015 Retold, Beaver Galleries, Deakin, ACT
2014 Timelapse, Turner Galleries, Perth, WA
2012 Chasing Shadows, Turner Galleries, Perth, WA
2009 Casting shadows, Beaver Galleries, Canberra, ACT
2005 Confabulations, Beaver Galleries, Canberra, ACT
2004 Storylines, Byte Gallery, Perth, WA
2002 Relating Narratives, Artplace, Perth, WA
1997 Stories, Lies and Make Believe, Artplace, Perth, WA

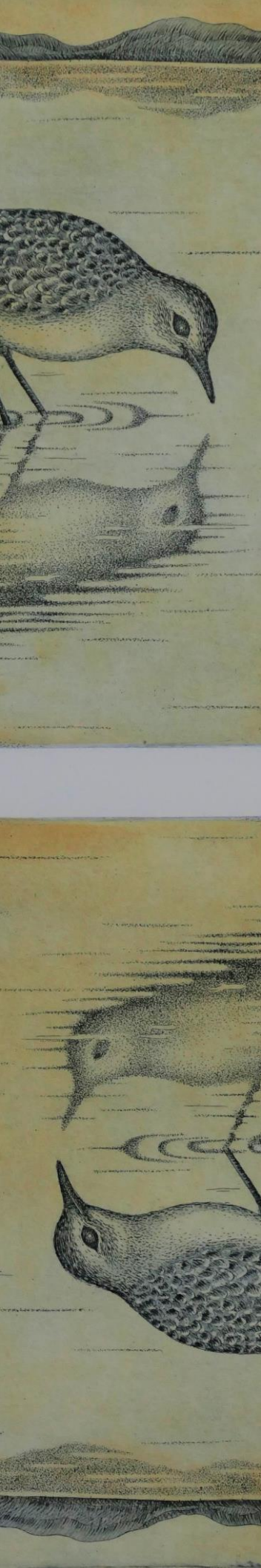
SELECTED GROUP EXHIBITIONS

2023 Wild, New England Contemporary Print Gallery, NSW
2022 Kati Thamo/ Christina Metelli, Art Images Gallery, Adelaide
2021 Subtleties of Obsession, Albany Town Hall Galleries, Albany, WA
2021 Kati Thamo/ Elizabeth Banfield, Queenscliff Gallery, Vic
2021 Peebles Print Award, Queenscliff Gallery, Vic
2020 Megalo International Print Prize, Canberra, ACT
2019 Peebles Print Award, Queenscliff Gallery, Vic
2019 Natura, Flux Gallery, Perth, WA
2019 Burnie Print Prize, Burnie, Tas
2018 Running Deep, Fremantle Art Centre, WA
2017 Geelong Print Award, Geelong, Victoria
2017 Tracing the Line, Port Jackson Press Print Gallery, Victoria
2017 Burnie Print Prize, Burnie, Tasmania



SELECTED GROUP EXHIBITIONS CONTINUED

- 2016 *Proof*, Port Jackson Press Print Gallery, Vic
- 2016 *Notions*, Port Jackson Press Print Gallery, Vic
- 2016 *Over Here*, Nyiisstor Studio, Perth, WA
- 2015 *Beastarium*, Dubbo Regional Gallery, NSW
- 2015 *Silk Cut Award*, Melbourne, Victoria
- 2015 *Burnie Print Prize*, Burnie, Tasmania
- 2014 *Silk Cut Award*, Melbourne, Victoria
- 2013 *Silk Cut Award*, Melbourne, Victoria
- 2013 *Burnie Print Prize*, Burnie, Tasmania
- 2012 *Silk Cut Award*, Melbourne, Victoria
- 2012 *Ten(t)*, Albany Residency Museum, Albany, WA
- 2011 *Paperartzi*, Vancouver Art Centre, Albany, WA
- 2009 *Continuum*, Gorepani Gallery, Albany, WA
- 2019 *Banyule Works on Paper Award*, Banyule, Victoria
- 2009 *International Print Triennial*, Krakow, Poland
- 2009 *Silk Cut Award*, Melbourne, Victoria
- 2008 *Shadow me Home*, Moore's Building, Fremantle, WA
- 2007 *Christmas Collection*, Beaver Galleries, Canberra, A.C.T.
- 2007 *Paperartzi*, Albany, WA
- 2007 *Emblems of Belonging*, Residency Museum, Albany, WA
- 2006 *Unravelling Country*, Gorepani Gallery, Albany, WA
- 2006 *'Hotspot*, Albany Residency Museum, Albany, WA
- 2005 *33*, Port Jackson Press, Melbourne, Victoria
- 2003 *Bacchanalia*, Gorepani Gallery, Albany, WA
- 2003 *Women Remembering Women*, Moore's Building Fremantle, WA
- 2003 *Christmas Collection*, Beaver Galleries, Canberra, A.C.T.
- 2001 *Modo de Volar*, Entrepot Gallery, Hobart, Tas.
- 2001 *Small Passions*, Fine Arts Gallery, Hobart, Tas
- 2001 *Mine Own Executioner*, Mundaring, WA
- 2000 *The Feast*, Albany, WA
- 1998 *Small Figures - Big Lives*, Fremantle Arts Centre, Fremantle, WA



AWARDS

- 2017 Great Southern Art Award, Print Prize*
- 2016 Western Australian Printmedia Award, Regional Award*
- 2014 Western Australian Printmedia Award, Regional Award*
- 2012 Centennial Art Prize, Print Award*
- 2009 Banyule Works on Paper Award, Highly Commended*
- 2009 Print(Ed) Award, Judge's Choice Award*
- 2009 Western Australian Printmedia Award, Best Edition Award*
- 2007 Albany Art Prize, Major Open Award*
- 2006 Wanneroo Art Award, Mixed Media Award*
- 2004 Albany Art Prize, Gallery 500 Award*
- 2003 Western Australian Printmedia Awards, Major Open Award*
- 2002 Fremantle Print Award, People's Choice Award*
- 2002 Fremantle Print Award, Highly Commended*
- 2002 Albany Art Prize, Airport Award*
- 2001 Albany Art Prize, Print Award*
- 1999 ITC Art Prize, Highly Commended*
- 1998 Printmakers Assoc. of W.A. Competition, Highly Commended*
- 1996 Printmakers Assoc. of W.A. Competition Award*
- 1995 'Wild Art' Competition, Black and White Award*
- 1992 Albany Art Prize, Miniature Award*

PUBLIC ART COMMISSIONS

- 2022 Great Southern Grammar, Albany WA*
- 2017 Perth Children's Hospital, Perth, WA*
- 2013 Koorabup Community Park, Denmark, WA*
- 2011 Harford Grove Public Art, Yanchep, WA*
- 2007-8 Denmark Multi Purpose Health Centre, External Artwork Commission*
- 2006 Southern Forest Sculpture Walk Commission, Northcliffe, WA*
- 2004-5 Albany Justice Complex, Internal Artwork Commission, Albany, WA*
- 2001-2 Albany Primary School Percent For Art Project, Albany, WA*

PRINT COMMISSIONS

- 2009 Print Council of Australia*



PRINT COMMISSIONS

2009 Print Council of Australia, annual print commission, Victoria

2000 Print Council of Australia, annual print commission, Victoria

RESIDENCIES

2017 Police Point Residency, MRAG, Mornington Peninsula, Victoria

2010 Art source Residency (Eastern Europe travel grant)

2004 PAWA Artist in Residence, Northbridge, WA

2003 Artist in Residence, Shell Fremantle Print Award, WA

PUBLIC COLLECTIONS

Print Council of Australia., Native Title Tribunal., Banyule City Council, Vic., Charles Sturt

University, NSW., Murdoch University, WA., Charles Darwin University, NT., Queensland

University of Technology Art Museum, Qld., Toowoomba Regional Art Gallery, Qld., Gladstone

Regional Art Gallery, Qld., Burnie Regional Art Gallery, Tas., City of Fremantle, WA., St John of

God Hospital, WA., City of Wanneroo, WA., Scotch College, WA., City of Albany, WA., Great

Southern Regional College, WA., City of Swan, WA., City of Whitehorse, Vic., Grafton Regional

Art Gallery, NSW., Forbo Holdings, Switzerland, Perth Children's Hospital, North Metropolitan

College of TAFE, WALGA.,

City of Perth