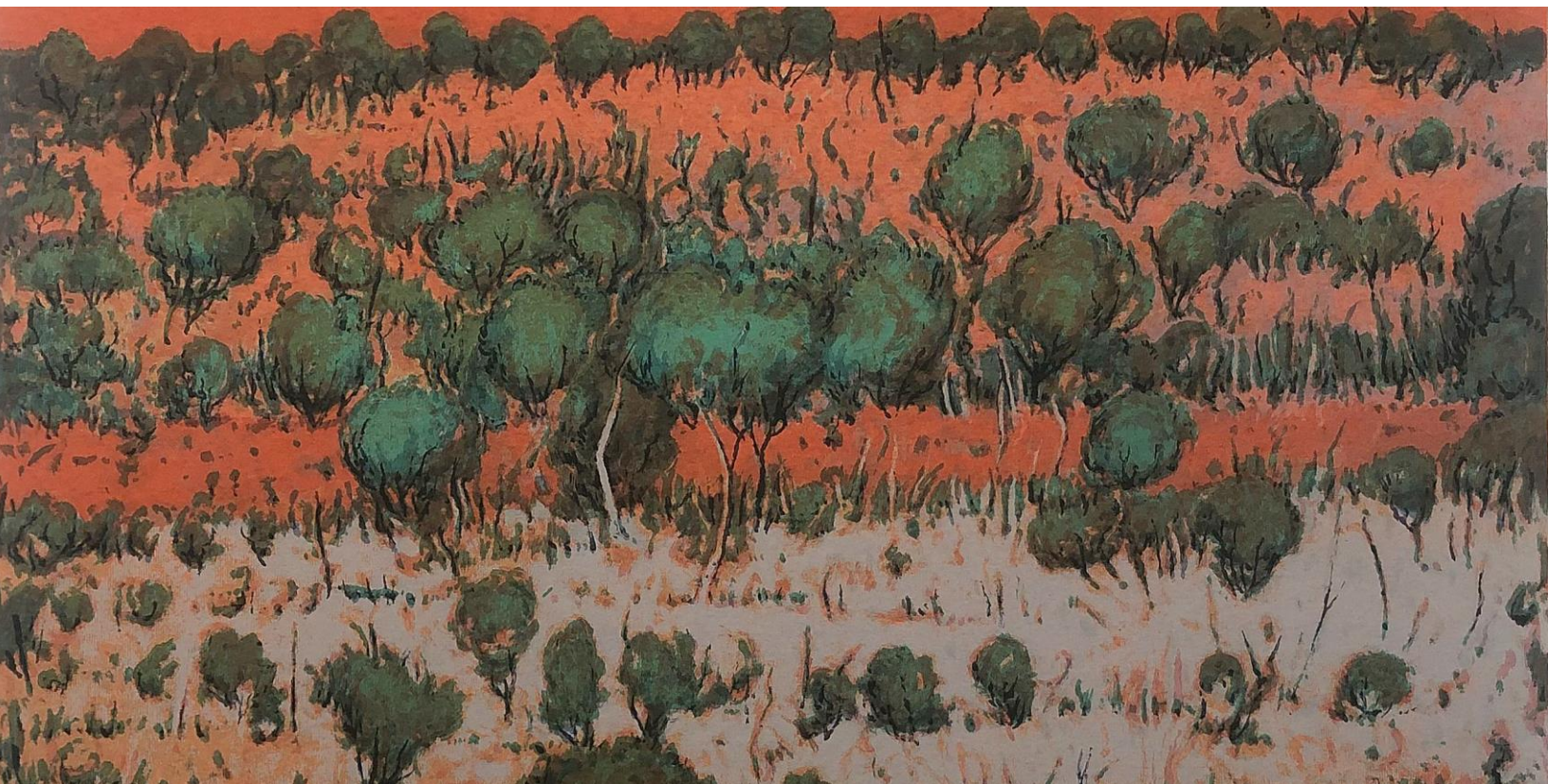




GALLERY



CONTEMPLATING AUSTRALIA

Collectable prints of the 20th Century

Exhibition Catalogue

May 6th – 17th 2023

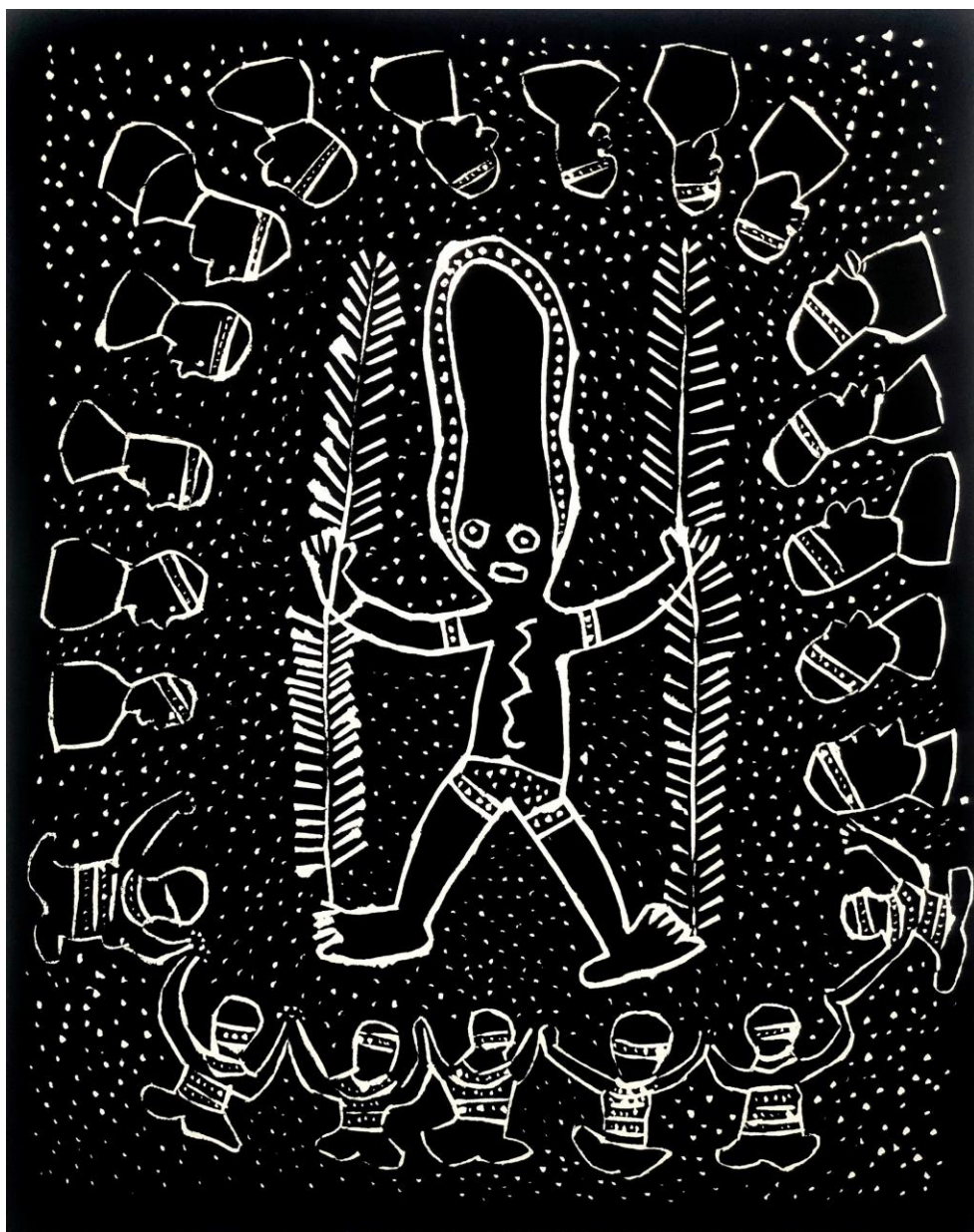


Contemplating Australia celebrates printmaking by significant Australian artists of the 20th century. This exhibition focuses on mid-century figurative artists associated with The Antipodeans movement and artists who were deeply engaged with the Australian landscape.

The Antipodeans movement emerged in the late 1940s and early 1950s as a response to the dominance of abstract expressionism in the art world. The group, which included artists such as Arthur Boyd, Charles Blackman, and Robert Dickerson, sought to revive figurative art and explore the human form as a subject. Printmaking was an essential medium for many of these artists, allowing them to create multiple copies of their works and reach a broader audience. The exhibition showcases their prints, offering visitors a glimpse into their artistic vision and technical mastery.

In addition to the Antipodeans, the exhibition also highlights artists who were deeply engaged with the Australian landscape. These artists, such as John Olsen, Clem Millward and Indigenous painter Jarinyanu David Downs, drew inspiration from the unique and diverse Australian environment. Through their prints, they captured the vastness, beauty, and cultural significance of the Australian landscape, showcasing its rugged terrains, distinctive flora and fauna, and the deep connection between the land and its people.

Contemplating Australia celebrates the artistic achievements of these significant artists and offers viewers an opportunity to reflect on Australia's cultural heritage and the profound influence of the country's natural surroundings on its artistic expression.



Yapurnu

JARINYANU DAVID DOWNS

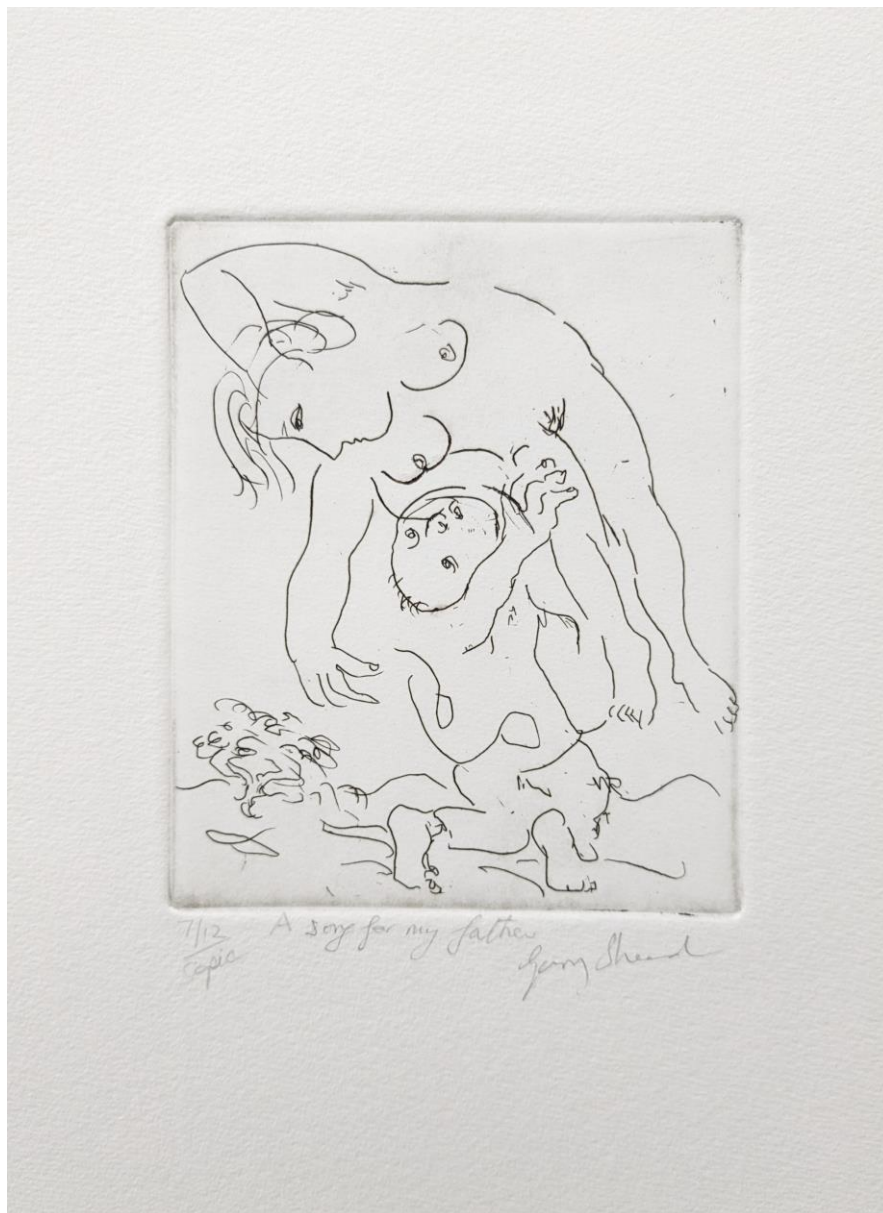
Linocut

Edition of 95

Image size: 400 x 507 mm

Frame size: 650 x 780 mm

Framed \$1480



A Song for My Father

GARRY SHEARD

Etching

Edition of 12

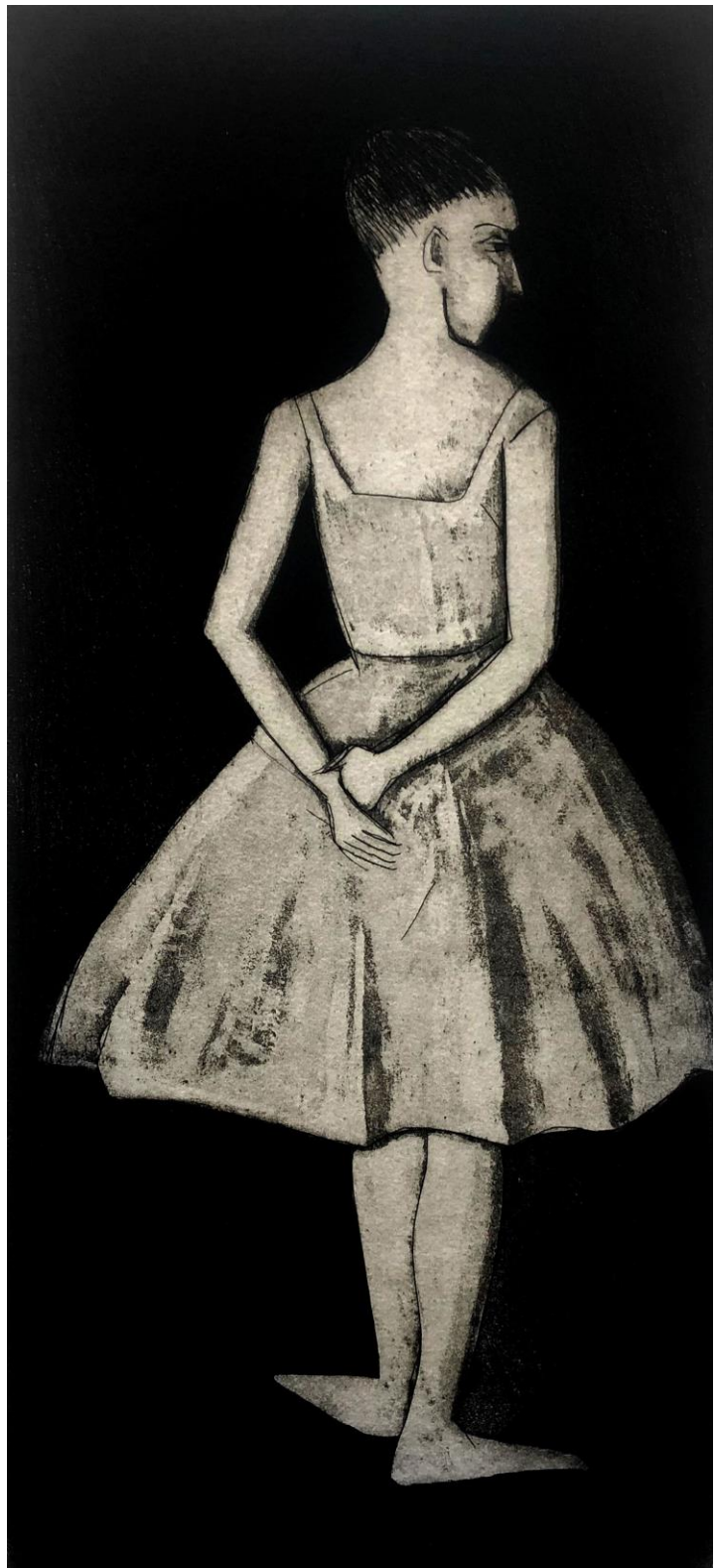
Image size: 120 x 145 mm

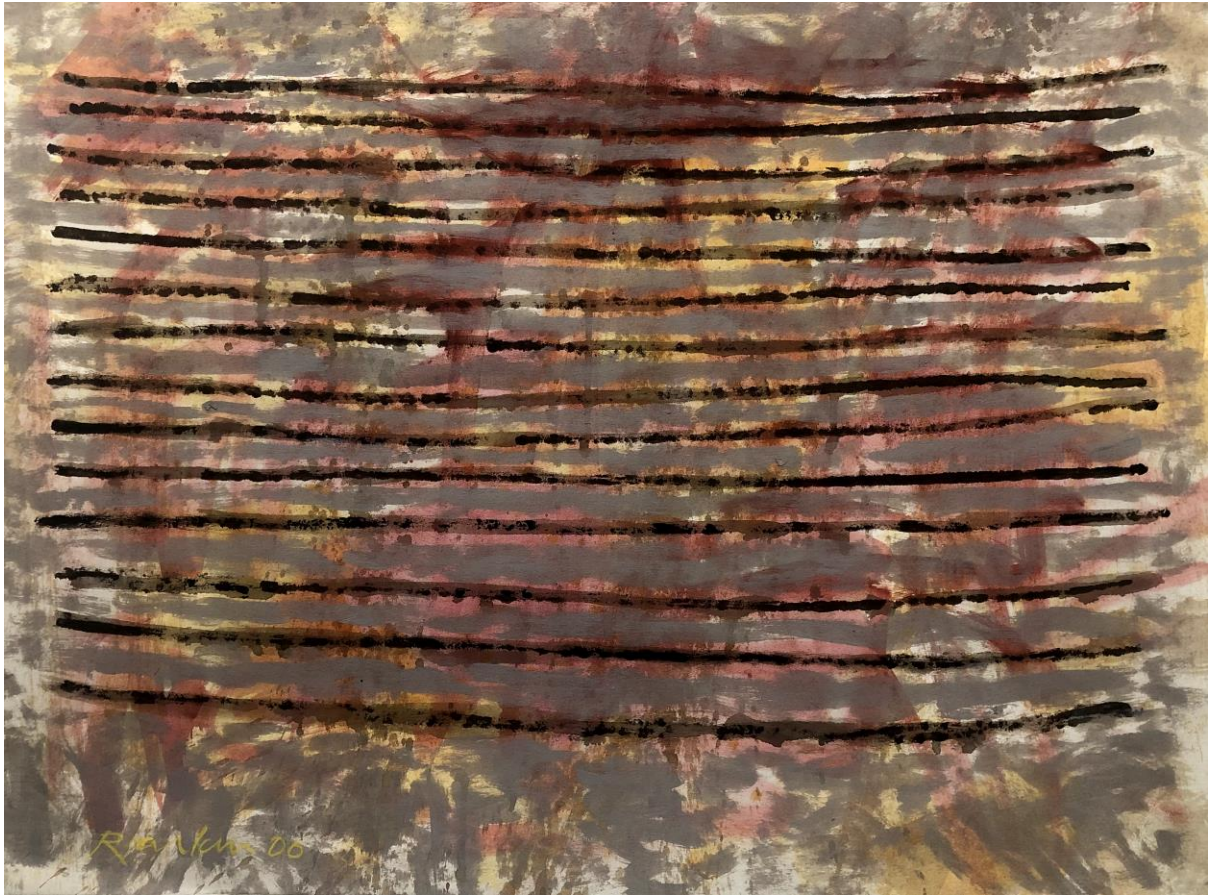
Frame Size: 340 x 465 mm

Framed \$1255

Coryphée
ROBERT DICKERSON
Etching
Edition of 35
Image size: 200 x 455 mm
Frame size: 610 x 880 mm

Framed \$2480





Grey Changes

DAVID RANKIN

Painting on paper

Edition of 1

Image size: 760 x 565 mm

Frame size: 920 x 735 mm

Framed \$4470



Matisse Balcony

BERNARD OLLIS

Etching

Edition of 50

Image size: 247 x 325 mm

Frame size: 463 x 653 mm

Framed \$1050



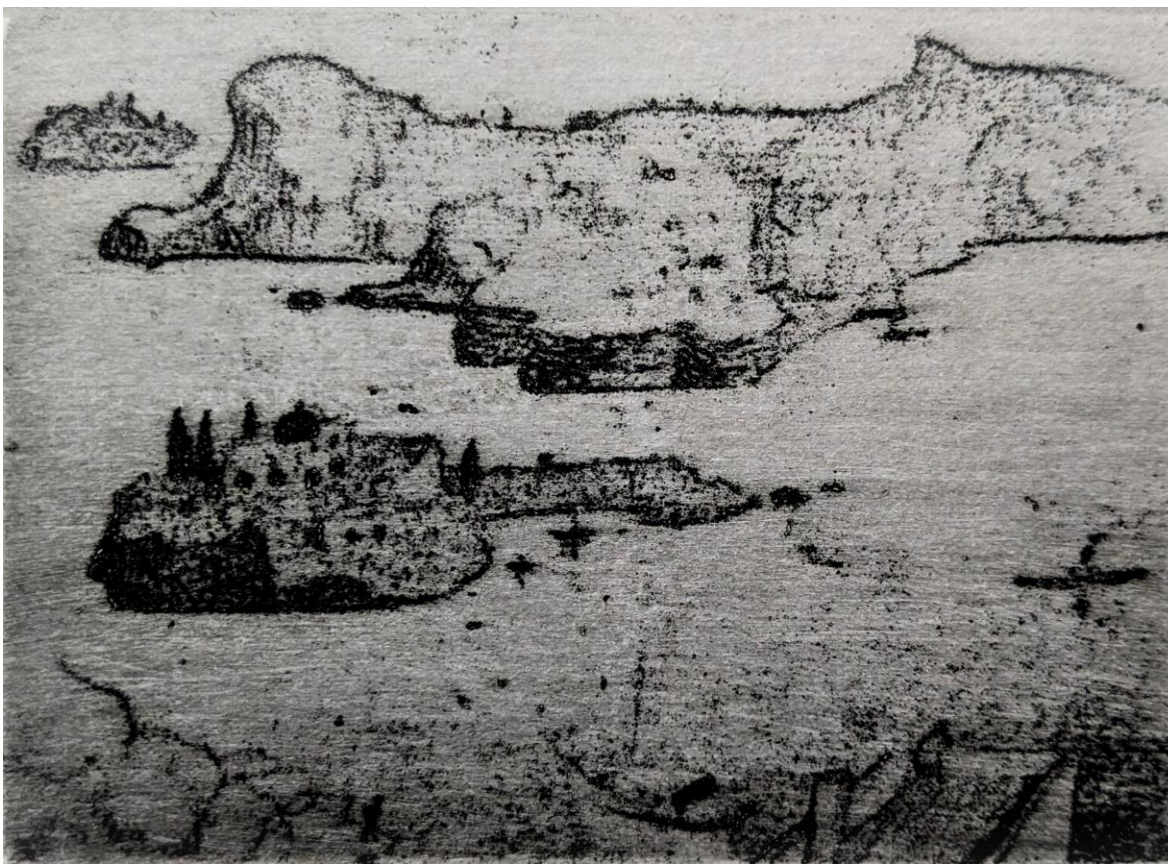
Monet's Bridge
BERNARD OLLIS
Etching

Edition of 50

Image size: 247 x 325 mm

Frame size: 463 x 653 mm

Framed \$1050



Greek Islands (1976)

LLOYD REES

Etching

Edition of 90

Image size: 135 x 95 mm

Frame size: 435 x 560 mm

Framed \$2410



The Sunlit Plains

JOHN COBURN

Etching

Edition of 30

Image size: 348 x 330 mm

Frame size: 585 x 580 mm

Framed \$2,500



Ginza Women (1990)

ROBERT DICKERSON

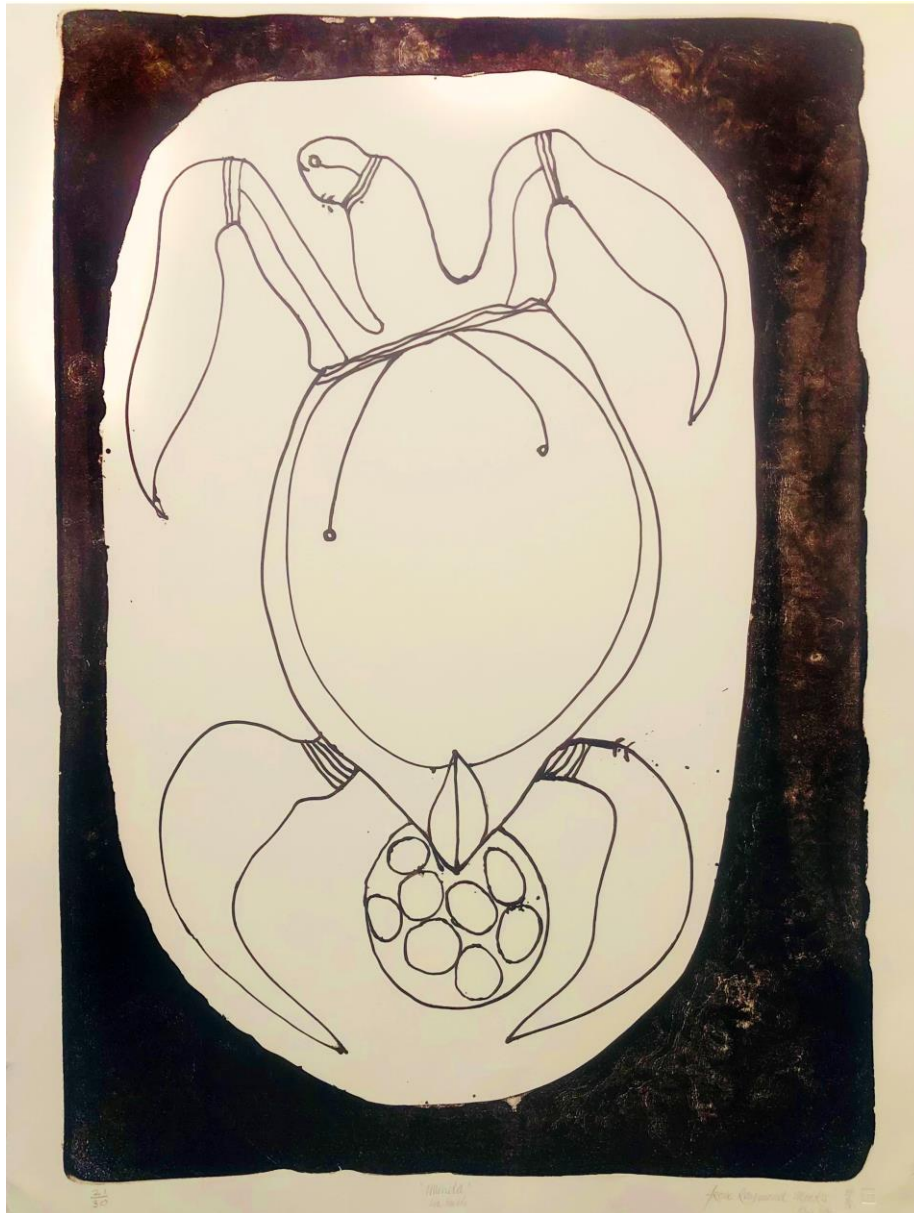
Lithograph

Edition of 30

Image size: 565 x 765 mm

Frame size: 715 x 925 mm

Framed \$3340



Munita - Sea Turtle
ARONE RAYMOND MEEKS
Lithograph
Edition of 30
Image size: 495 x 700 mm
Frame size: 690 x 895 mm

Framed \$1620



The Kiss
CHARLES BLACKMAN
Etching
Edition of 40
Image size: 210 x 290 mm
Frame size: 450 x 540 mm

Framed \$2430



Mother and Child (2000)

JOHN OLSEN

Etching

Edition of 35

Image size: 530 x 500 mm

Frame size: 715 x 900 mm

Framed \$6840



Nightfall, Central Australia (1999)

CLEM MILLWARD

Screenprint

Edition of 95

Image size: 570 x 570 mm

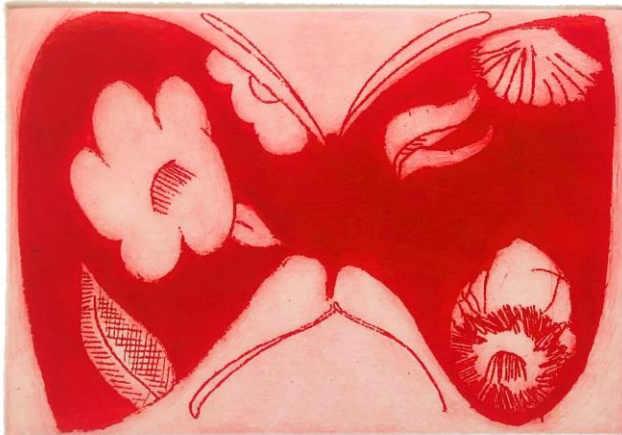
Frame Size: 830 x 840 mm

Framed \$1550



Susannah Bathing
ARTHUR BOYD
Etching
Edition of 50
Image size: 250 x 330 mm
Frame size: 460 x 610 mm

Framed \$3300



A/P

'Papillon'



Blackman

Papillon

CHARLES BLACKMAN

Etching

Edition of 20

Image size: 220 x 260 mm

Frame size: 590 x 435 mm

Framed \$1865



Tree frog (2008)

JOHN OLSEN

Etching

Edition of 40

Image size: 110 x 135 mm

Frame size: 453 X 645 mm

Framed \$3400